

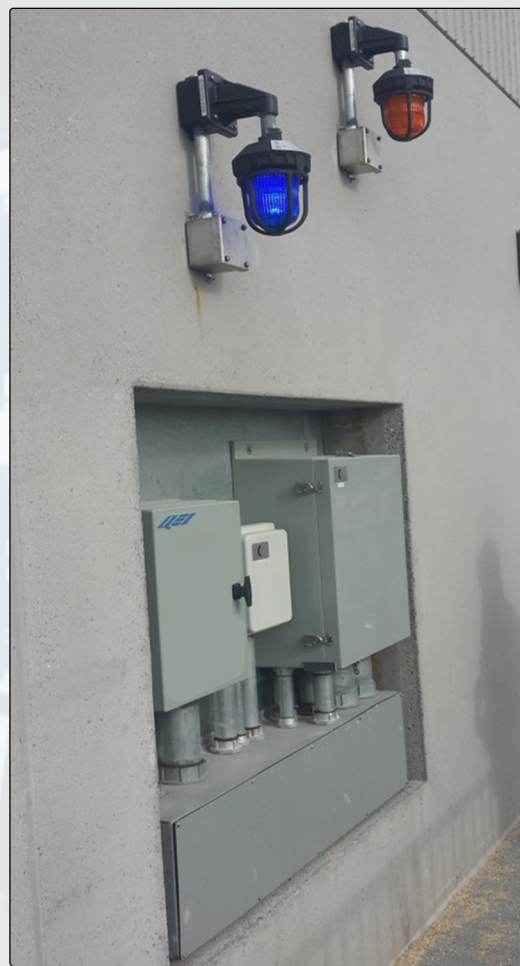


*The Solutions Provider*

The **Emergency Trip System (ETS)** is used for monitoring trip conditions by Trip Push Buttons (TPB) at multiple locations along the rail track. Trip Push Buttons are used for tripping the two adjacent substations and deenergize the feeding power of a rail track section in case of an emergency. A phone is used to communicate directly with the dispatch control center and report an emergency in the track.

The system monitors TPB coil voltage, current trip status and the general health of the ETS equipment installed along the track. Bright blue LEDs always show the location of the ETS unit along that section and a flashing amber LEDs shows train drivers the presence of a work crew on a track section.

The status conditions of each ETS unit along the track and the fact that personnel are present on that section of line are relayed to the nearest ePAQ 9xxx data concentrator for local display (via touch screen HMI) as well as relaying this information to the central SCADA Operator Workstation.



Wall-Mounted ETS

# ETS

## Emergency Trip System

### Features

- Works With Distributed DIO Modules for
  - ♦ Trip Condition Monitoring, Hardware Fail Alarms and Worker Presence Warnings
- ♦ Monitors Safety Shutdowns of Feeders
- Local Amber/Blue LED Indicators for
  - ♦ Announcing ETS Unit Location and Safety Indication of Personnel Being Present
- Notifies Nearest Data Concentrator and
  - ♦ SCADA Master Station of Current Trip Condition
- ♦ Redundant RS-485 Communications for High Reliability
- ♦ Supports IEEE Standard DNP3 Protocol
- ♦ Status Changes are Time Stamped via Distributed I/O Clock
- ♦ 19" Rack Mount, 277VAC Powered

Visit [qeiinc.com](http://qeiinc.com) for more information

QEI, LLC founded 60 years ago, has been serving the Electric Utility market with products and services in Distribution/Feeder Automation, Substations and Control Rooms. As an ISO9001:2015 Registered Company, QEI offers a dedicated fully staffed Customer Service department to support all our hardware and software products with in house product repairs, onsite startup/commissioning services and training in a location of your choice, and more. **QEI, "The Solutions Provider" we look forward to serving your needs.**

