



The Solutions Provider

QRTPS

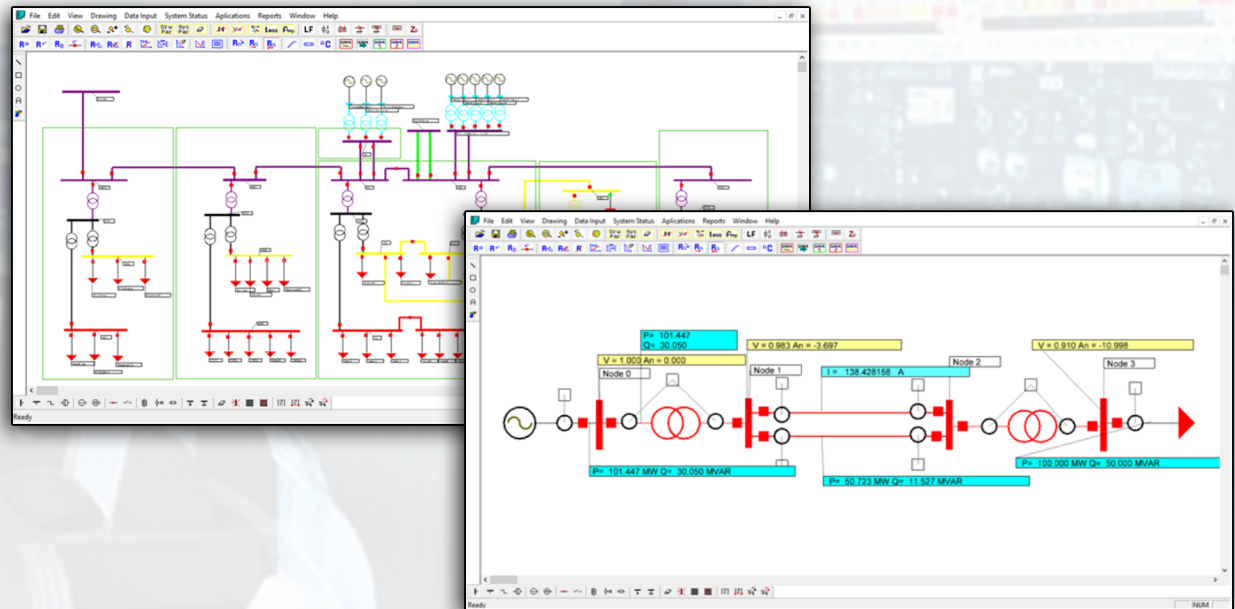
Real-Time Power Simulator

QRTPS (Real-Time Power Simulator) plays an important role in system operation and control in a power system. RTPS has a host of network computation functions, such as state estimation, load prediction, optimal power flows, reactive power control, voltage control, and contingency analysis. Real Time Power Simulator (RTPS) is an automation system that collect energy measurement data from the field and making it available to users through graphics, online monitoring tools, and energy quality analyzers, thus enabling the management of energy resources. The SCADA system forms the heart of RTPS and performs data acquisition, updates of the system status through alarm processing, updates the user interface, and executes control actions when its required.

QEI offers the entire ADMS system (Advanced Distribution Management System) platform, which includes the integrated systems SCADA, DMS, OMS, and GIS.

QRTPS Features

- ♦ Easy Integration to SCADA
- ♦ Power System Analysis
- ♦ Transient Stability
- ♦ Harmonic Analysis
- ♦ Capacitor Bank Locator
- ♦ Protection Coordination
- ♦ Optimization Applications



QEI, LLC founded 60 years ago, has been serving the Electric Utility market with products and services in Distribution/Feeder Automation, Substations and Control Rooms. As an ISO9001:2015 Registered Company, QEI offers a dedicated fully staffed Customer Service department to support all our hardware and software products with in house product repairs, onsite startup/commissioning services and training in a location of your choice, and more.

QEI, "The Solutions Provider" we look forward to serving your needs.

