

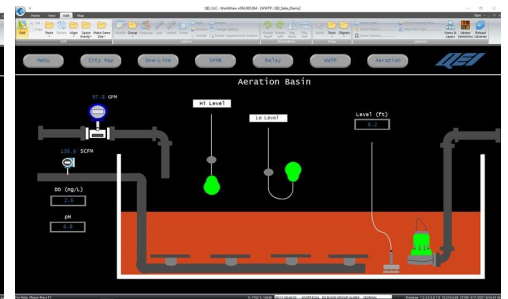
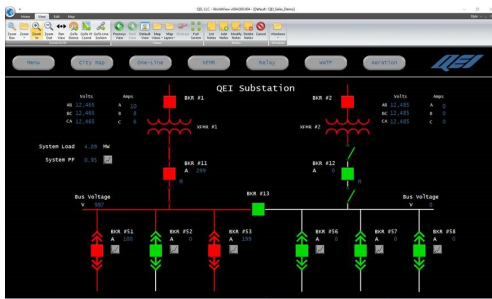
Automate Your Existing System Maps to Make Them Securely Accessible to any Authorized User on your Network.

WorldView presents your entire distribution system on the Windows® desktop in one contiguous display called a **World Map**.

- Each operator views a movable window which can encompass the complete World Map or can zoom in on small areas, or move to different areas of the World Map.
- Additional details appear or disappear as you zoom in and out in a way to make current conditions understandable at a glance.
- An intuitive point-and-click interface is present for control, tagging, placing notes, initiating control sequences, setting alarm limits or selecting alternate views.
- Your operator can cut-and-paste SCADA values and graphics directly into MS

Office® products such as Excel and MS WORD.

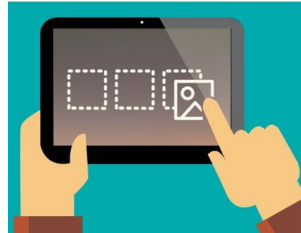
- All points have symbols to show tagged, manual, alarm blocked or telemetry failed conditions.
- Multistate color or flash annunciation of field conditions will convey quick understanding to your operators.
- There is a provided library of standard symbols for optimal clarity, or you can import CAD symbols or IED bitmapped templates for your own custom displays.
- There is a simple-to-use WorldView Editor for creating additional displays or adding remote devices or IEDs.
- Any system analog value can be plotted or trended on user-defined graphs.



Automate Your Existing Water, Gas or Electrical System Maps

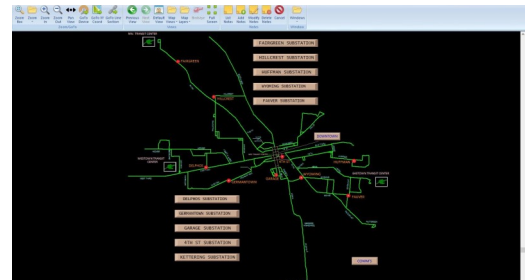
WorldView

- Multiple graphing options (line, bar, pie chart, etc) may be attached to any poke point on your system map for easy operator selection.



Simple Drag-and-drop Configuration

- Map poke points may open any windows application (spreadsheet, browsers, security cameras, etc.).
- Your displays can incorporate not only vector based, but bitmapped images for display or animation.
- Graphed historical data can be easily selected using an intuitive calendar interface.
- Graphed data can be dynamically updated or be assigned a fixed start time and duration.
- You can generate SCADA displays accessible from any standard web browser.
- WorldView consoles can be placed in secure modes (oversight, but no control) or training modes in order to limit access and maintain security.



See Your Enterprise on a Single Display or Drill Down for a More Detailed View.

- Your system alarms (or desired subset) can be texted to your cell phone for 24/7 dispatch.
- You can implement real-time data links to other systems using ICCP (Inter Control Center Protocol), Multispeak®, Mailbox Gateways, or by appearing as a simple RTU to another SCADA Master Station.
- Automatically and continuously publish real-time or historical data to a system historian using Oracle, MS-SQL or other relational database.
- Console access is protected through user name, password, comm link encryption, console timeout, auto password update and other features as needed for your NERC-CIP Compliance program.

QEI, LLC

45 Fadem Road
Springfield, NJ 07081 USA
T: +973-379-7400 F: +973-379-2138
E: sales@qeinc.com
W: www.qeinc.com

This literature is for illustration purposes only and is not part of any contract. Features may be modified at any time without notice. All trademarks and names mentioned in this document remain the exclusive property of their holder.

V 21.6 03/24