

# RCAM-E<sup>TM</sup>

Automation for  
Underground  
Distribution

Go Underground with your  
Distribution Automation

## The RCAM-E<sup>TM</sup> is the Solution for Automating Underground Distribution

For switchgear in subsurface vaults

Completely waterproof

Fault identification and location

Automatic switching schemes

Automatic sectionalizing based on loss of voltage, over current or phase imbalance

Operates independently or in conjunction with your SCADA system

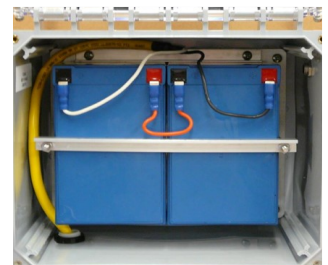
Local/Remote switch

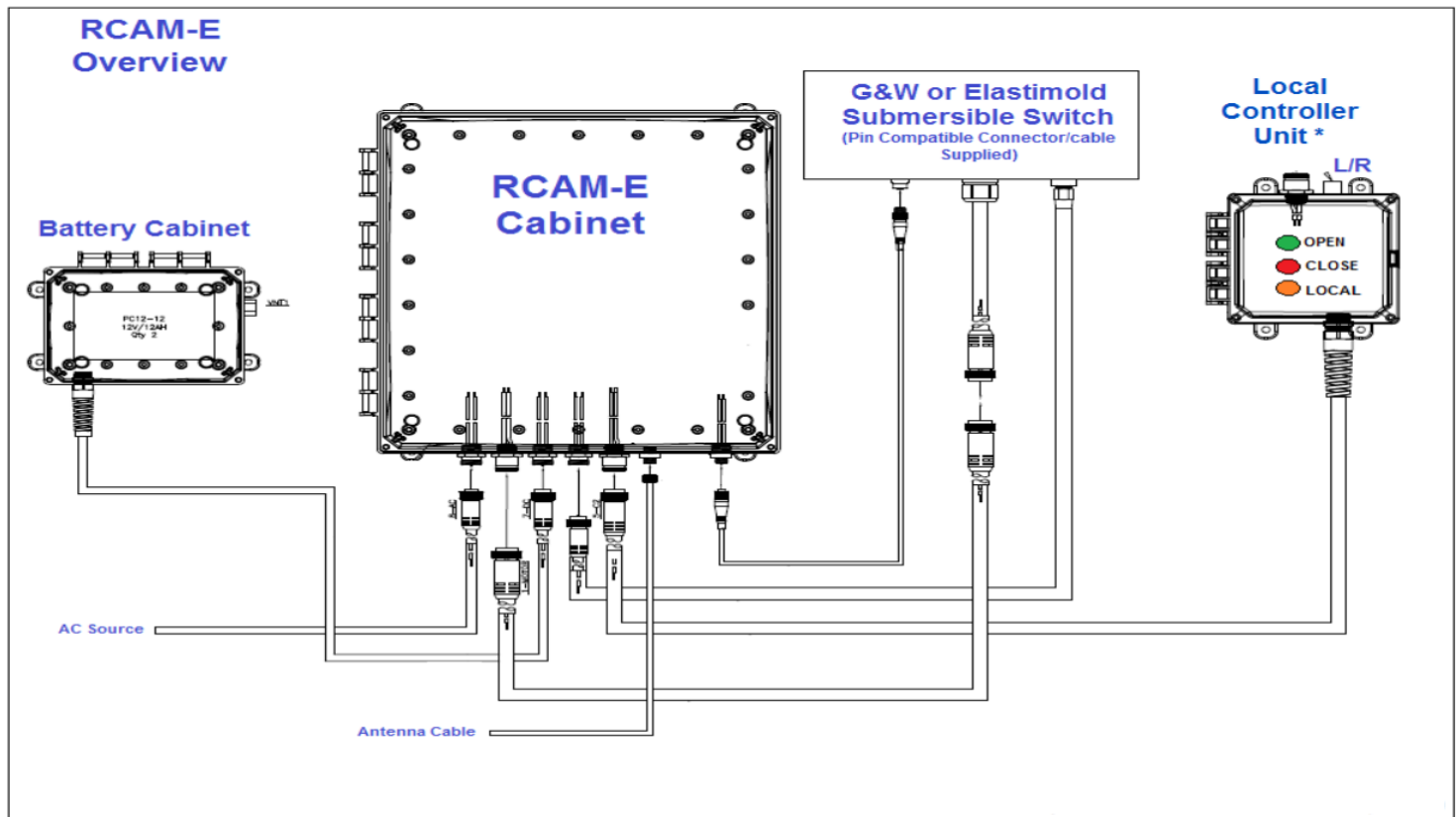
Data capture and logging

Automation of existing motorized switchgear can present a daunting task with large amounts of customized work and initially unique installations. The RCAM-E<sup>TM</sup> provides powerful automation, control and communications functionality in a single package.

Available in customized versions for both **G&W** and **Elastimold** switches, the RCAM-E<sup>TM</sup> will let you implement Automatic or manual control for restoration or sectionalizing, or permit that switch to operate as part of a larger SCADA based control plan of action.

Composed of RTU Main Cabinet, vented battery enclosure and optional Universal Control Unit, (see diagram on reverse), the RCAM-E<sup>TM</sup> will operate with widely available communication equipment and it contains adequate room and power for installation of the data transceivers. Pin compatible connectors interface directly to the switchgear control circuitry and customized cables can mount the control unit and batteries where most appropriate for your specific installations.





## BENEFITS

- Retrofit kits preserve existing investment
- Increased safety for personnel
- Increased efficiency and man-hour savings
- Loop auto sectionalizing and auto restoration (additional hardware may be required)
- Maintain and improve network redundancy
- SCADA monitoring and data logging
- Simple Windows® configuration software

## FEATURES

- Accessible local control
- DNP3 protocol compatible
- 120 VAC Powered with battery backup
- Compatible with your existing SCADA system and communications network
- Positive indication LEDs with test mode
- Accessible circuit breakers and R/L Switch
- Rugged IP68 enclosures
- Control fail indication

## QEI, LLC

45 Fadem Road  
Springfield, NJ 07081 USA  
T: +973-379-7400 F: +973-379-2138  
E: [sales@qeinc.com](mailto:sales@qeinc.com)  
W: [www.qeinc.com](http://www.qeinc.com)

This literature is for illustration purposes only, and is not part of any contract. As we have a policy of continuous product improvement, any features may be modified without notice. All trademarks and names mentioned in this document remain the exclusive property of their holder.

V 2.5 3/24

