

Substation Gateway Configuration for the Smart Grid



With the explosion of smart devices in the substation, there is a pressing need for a tool which is up to the task of integrating Intelligent Electronic Devices (IEDs) and managing an evolving communication and cyber security environment. **ConfigWiz 2.0** is the tool for that job.

ConfigWiz has been designed specifically for easier **IED integration and management** and special emphasis has been given to the operator interface in order to make this process as intuitive as possible. The extensive use of **templates and automatic default settings** will guide the user through complicated IED, protocol or communications issues in order to get the installation up and running as quickly as possible.

ConfigWiz 2.0 uses the latest Microsoft® software technology; the .NET Framework environment (minimum version 2.0), and will run on any PC using Windows XP, VISTA and Windows 7 (32 or 64 bit)

The maximum use of Microsoft Office products for mass data manipulation and automated documentation reduces the workload and eases training. Through familiar drag-and-drop functionality and a file compare a single IED, communications line or an entire RTU can be copied from one installation to another in simple intuitive steps. The ability to re-use these configuration “objects” will reduce errors and get your initial and subsequent installations up and running efficiently.

Since easy IED integration is the primary objective, a catalog of common devices is provided and the user can

Streamlined User Navigation with Simple, Consistent Look-and-Feel

Support for All Popular Protocols (DNP3, Modbus, PGE-2179, etc.) Currently used with IEDs and Gateway-Master Station Communications

Robust Auto-Checking to Prevent Configuration Errors

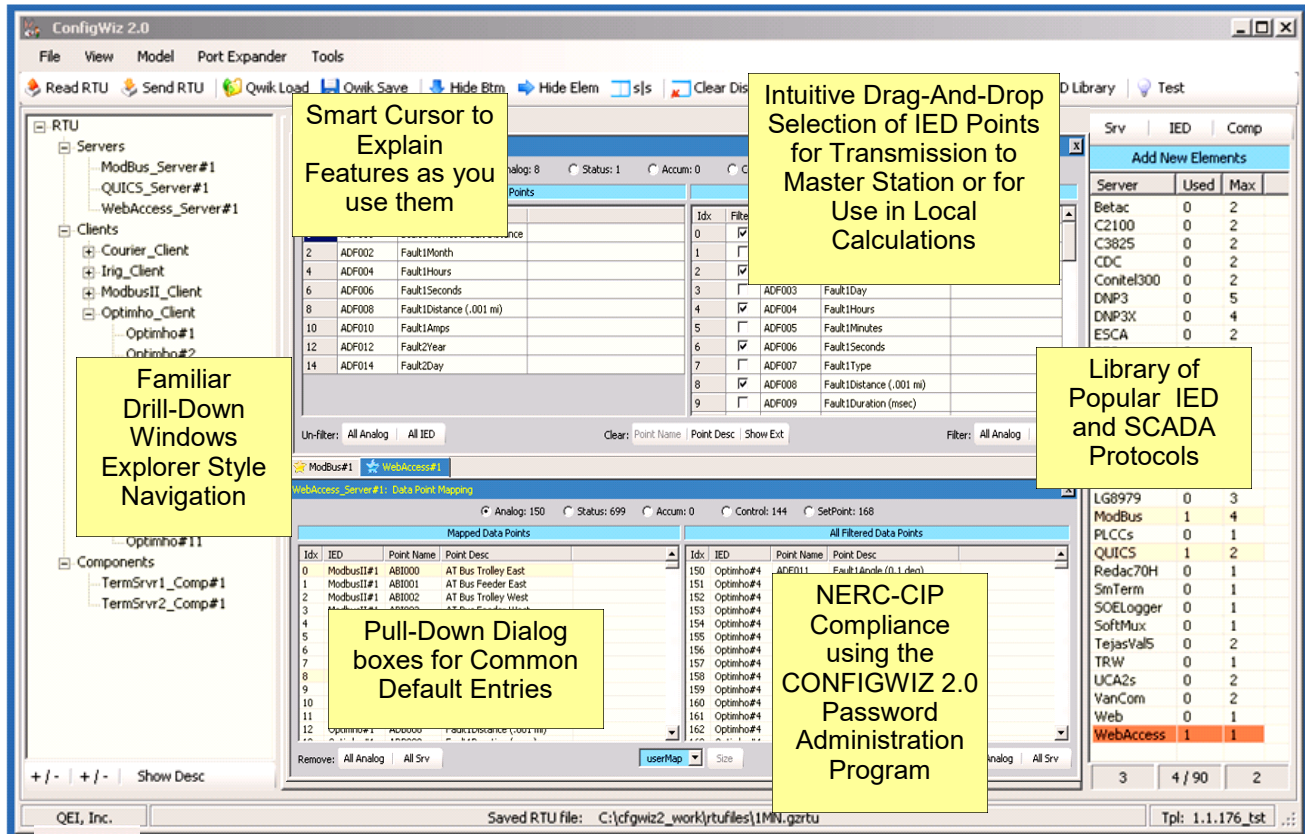
Comparison Utilities to Quickly Identify Differences Between Existing Templates and Work-in Progress

Default Selection Settings to Minimize Work and Get You up and Running Quickly

Windows® Explorer type display for Easy Drill-Down and Overview

Intuitive IED Template Creation and Update

ConfigWiz 2.0



add additional "IED templates" to the library through their own creation or from the expanding QEI archive. These templates can be incorporated into a new configuration through an intuitive drag-and-drop process.

The physical connection between ConfigWiz 2.0 and the RTU/Gateway can be either serial or via a network socket, so password protected configuration changes can be made locally, remotely or both.

In addition to configuration of an RTU/Gateway, ConfigWiz 2.0 an internal computation engine will enable data manipulation and closed loop control. This, as well as other features, utilize the **Flash Loader** capability which permits easy download of updates, revisions and new RTU/Gateway firmware.

QEI, LLC
 45 Fadem Road
 Springfield, NJ 07081 USA
 T: +973-379-7400 F: +973-379-2138
 E: sales@qeiinc.com
 W: www.qeiinc.com

This literature is for illustration purposes only, and is not part of any contract. As we have a policy of continuous product improvement, any features may be modified without notice. All trademarks and names mentioned in this document remain the exclusive property of their holder.